



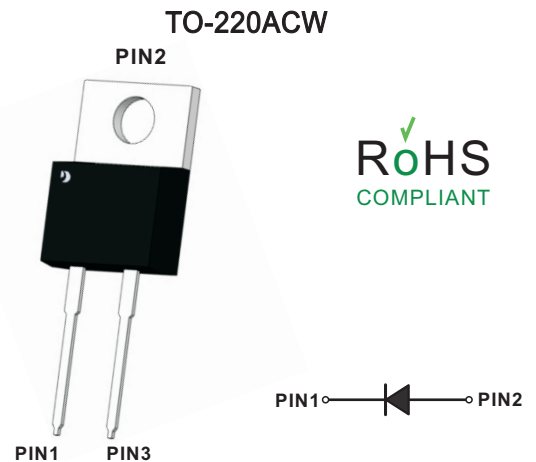
Fast Recovery Epi Diodes
Reverse Voltage – 600 Volts
Forward Current – 8Amperes

Features

- High frequency operation
- High surge forward current capability
- High purity, high temperature epoxy encapsulation for enhanced mechanical strength and moisture resistance
- Guard ring for enhanced ruggedness and long term reliability

Mechanical data

- Case: TO-220ACW
- Approx. Weight: 2.15g (0.076oz)
- RoHS compliant
- Case Material: “Green” molding compound, UL flammability classification 94V-0, “Halogen-free”.



MAXIMUM RATINGS AND ELECTRICAL CHARACTERISTICS

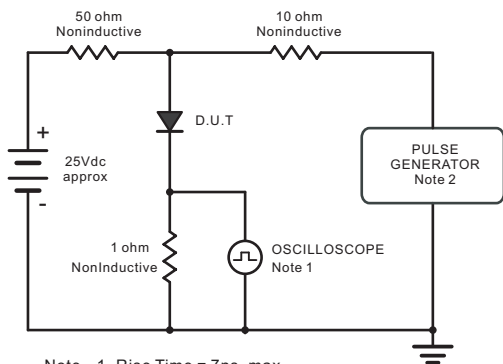
Ratings at 25°C ambient temperature unless otherwise specified

PARAMETER	Symbols	MURL860C	Units
Maximum Recurrent Peak Reverse Voltage	V_{RRM}	600	V
Maximum RMS voltage	V_{RMS}	420	V
Maximum DC blocking Voltage	V_{DC}	600	V
Maximum Average Forward	$I_{F(AV)}$	8	A
Peak Forward Surge Current,8.3ms Single Half Sine-wave Superimposed on Rated Load (JEDEC method)	I_{FSM}	100	A
Instantaneous forward voltage at 8A	V_F	1.5 1.2	V
Maximum instantaneous reverse current at rated DC blocking voltage	I_R	10 500	uA
Maximum Reverse Recovery Time NOTE 1	trr	35	ns
Maximum Thermal Resistance Junction To Case	$R_{\theta JC}$	2.2	°C/W
Operation Junction Temperature and Storage Temperature	T_j, T_{stg}	-55 ~ +150	°C

NOTE 1:Reverse recovery test conditions $I_F=0.5A, I_R=1.0A, I_{rr}=0.25A$



Fig.1 Reverse Recovery Time Characteristic And Test Circuit Diagram



Note: 1. Rise Time = 7ns, max.
Input Impedance = 1megohm, 22pF.
2. Rise Time = 10ns, max.
Source Impedance = 50 ohms.

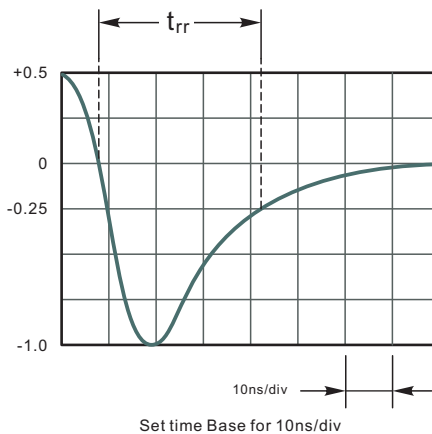


Fig.2 Typical Forward Current Derating Curve

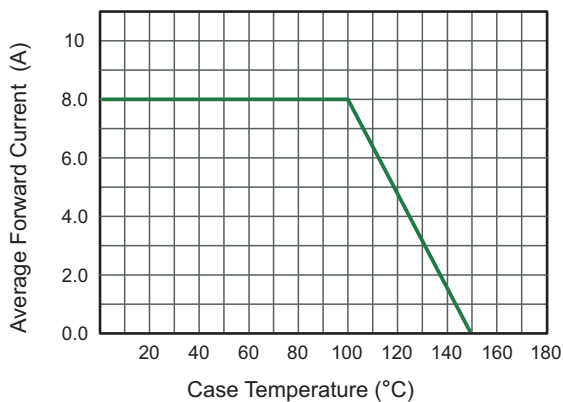


Fig.3 Typical Reverse Characteristics

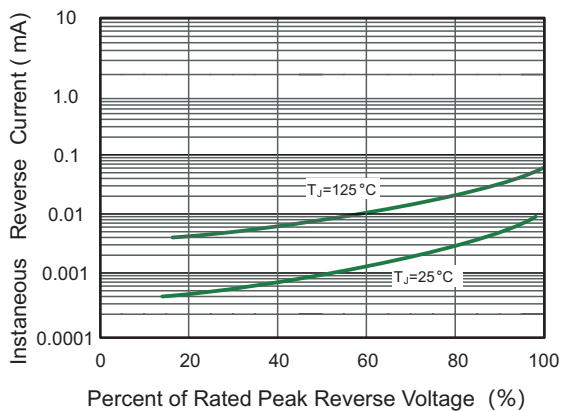


Fig.4 Typical Forward Characteristics

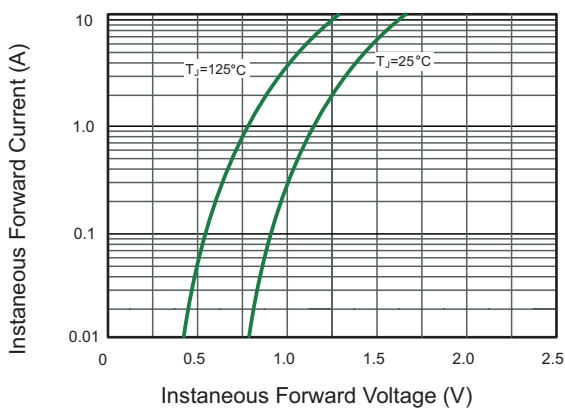
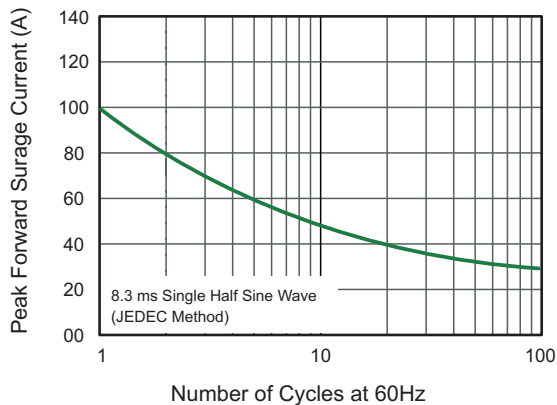


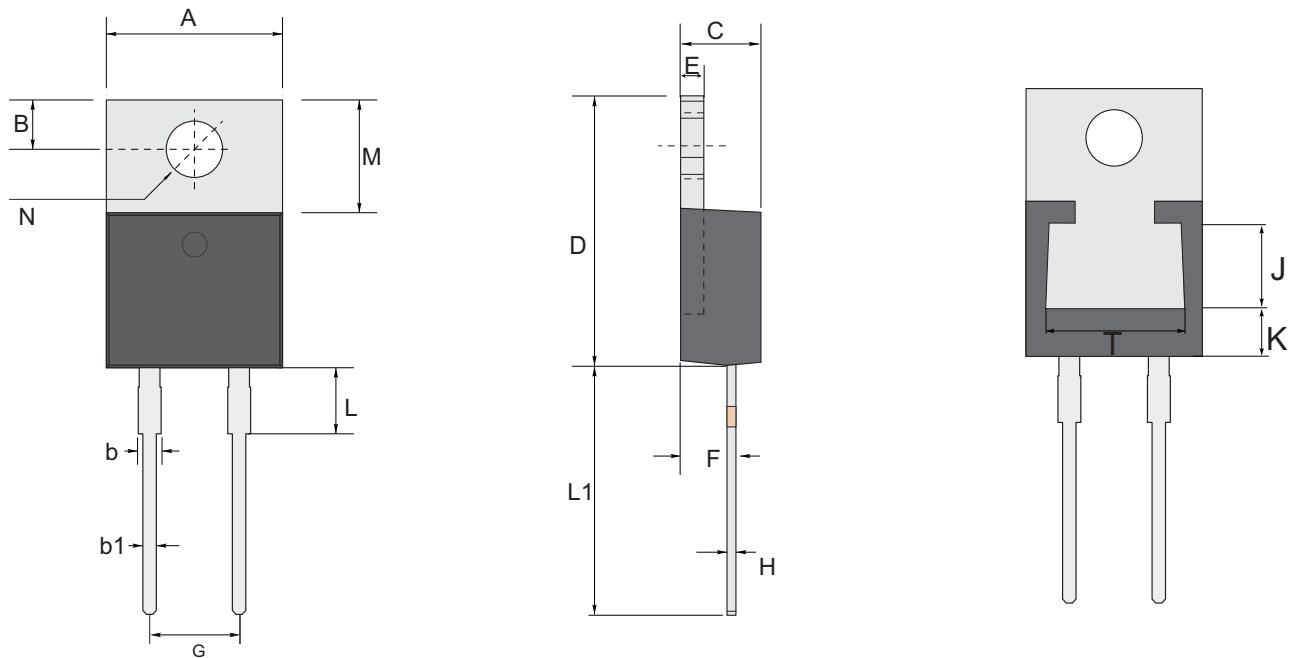
Fig.5 Maximum Non-Repetitive Peak Forward Surge Current





Package Outline
Through Hole Package ; 2 leads

TO-220ACW



TO-220ACW mechanical data

UNIT		A	B	b	b1	C	D	E	F	G	H	L	L1	M	N	J	T	K
mm	max	10.45	2.94	1.77	0.94	4.76	16.0	1.40	3.37	5.1 typ.	0.64	4.20	14.79	6.39 typ.	3.84 typ.	4.65 ref.	7.7 ref.	3.22 ref.
	typ	9.94	2.74	1.27	0.81	4.57	15.09	1.27	3.07		0.38	3.89	13.18					
	min	9.85	2.54	1.14	0.62	4.42	14.6	1.14	2.77		0.35	2.80	13.08					
mil	max	411	116	70	37	187	630	55	133	201 typ.	25	165	582	252 typ.	151 typ.	183 ref.	303 ref.	127 ref.
	typ	391	108	50	32	180	594	50	121		15	153	519					
	min	388	100	45	24	174	575	45	109		14	110	515					

Marking

Type number	Marking code
MURL860C	MURL860C



Important Notice and Disclaimer

Jingdao Microelectronics reserves the right to make changes to this document and its products and specifications at any without notice.

Customers should obtain and confirm the latest product information and specifications before final, purchase or use.

Jingdao Microelectronics makes no warranty, representation or guarantee regarding the suitability of its products for any particular purpose, not does Jingdao Microelectronics assume any liability for application assistance or customer product design.

Jingdao Microelectronics does not warrant or accept any liability with products which are purchased or used for any unintended or unauthorized application.

No license is granted by implication or otherwise under any intellectual property rights of Jingdao Microelectronics.

Jingdao Microelectronics products are not authorized for use as critical components in life support devices or systems without express written approval of Jingdao Microelectronics.